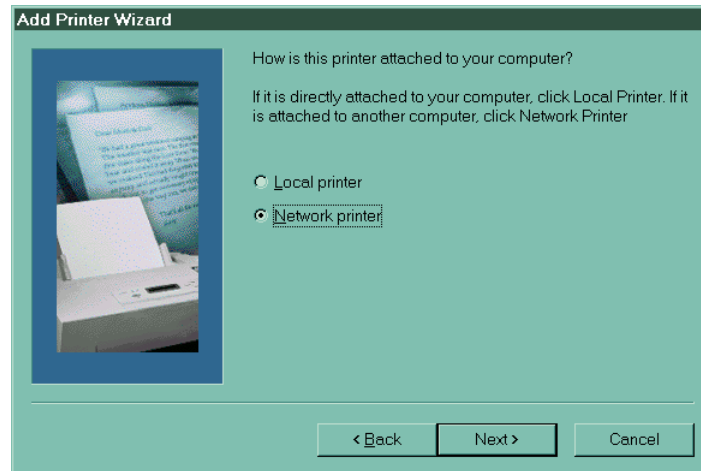


Setting Up the Printer Connection

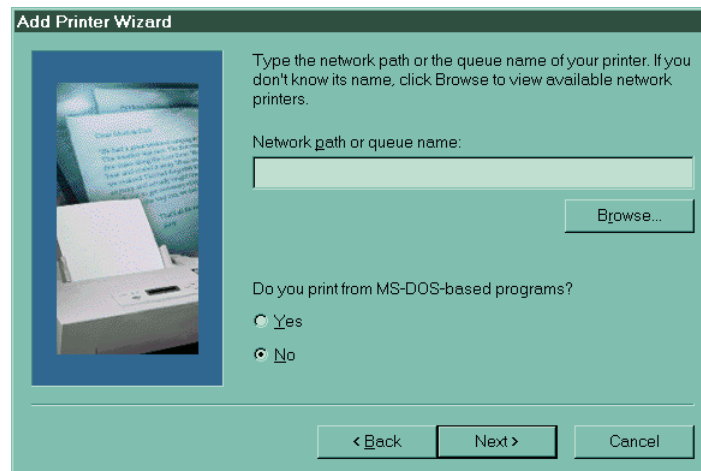
The printer utility is located in the **Start Button ->Settings ->Printers**. Click on the **Add Printer** icon and the Add Printer Wizard comes up where you click the **Next** Button.

1) First screen:

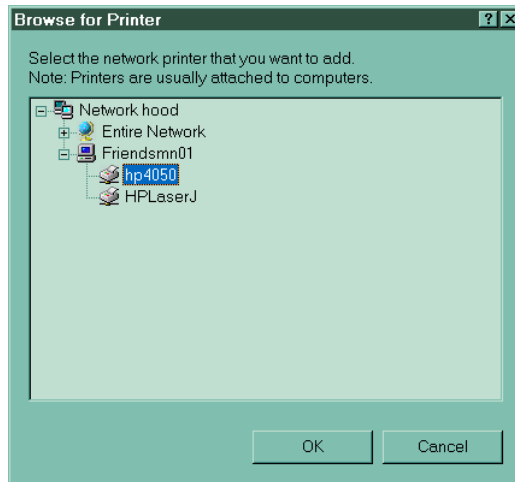


- Click on “Network Printer”.

2) Second Screen:

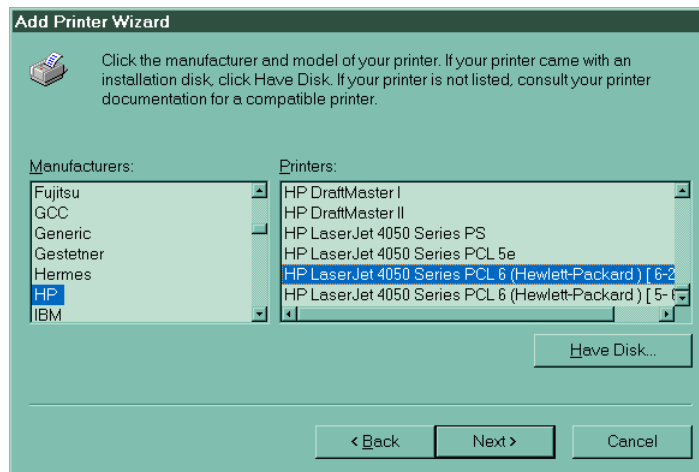


- A) Click on the **Browse** button to select the network path.



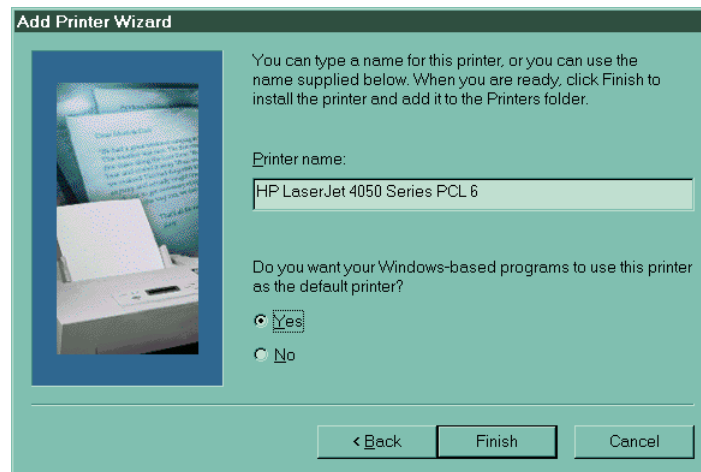
- Under “Friendsmn01”, select the hp4050
- B) Click on “**No**” for the MS-DOS-based programs.

3) Third Screen, sets up printer driver:



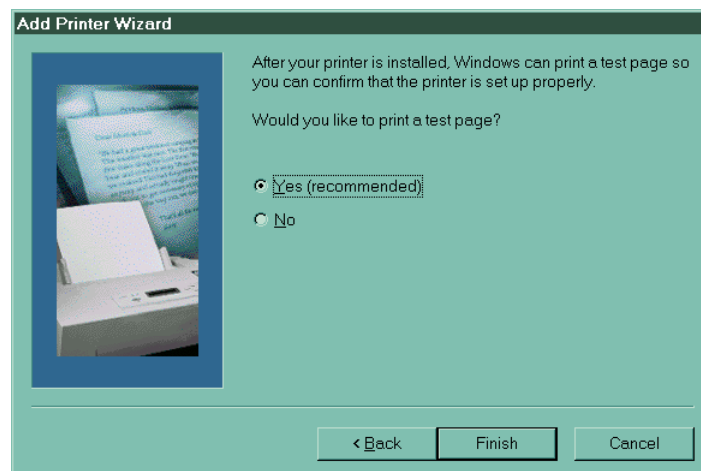
- “Manufacturers:” is HP.
- “Printers” is the HP LaserJet 4050 Series PCL 6 all the way down at the bottom of the list (Note: not all screens will show the date in brackets and that’s okay).

4) Fourth Screen:

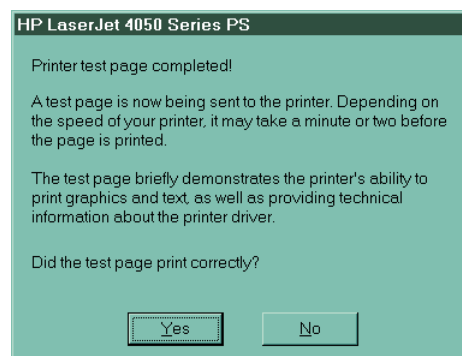


- Click on “**Yes**” for the default printer.

5) Fifth Screen:



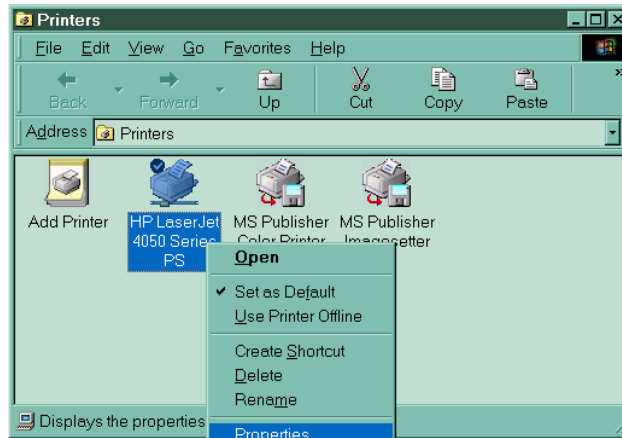
- Click on “**Yes**” for the test page.



Hopefully it did and you are all set. If it didn't, the troubleshooting guide will come up and can step you through some problem solving.

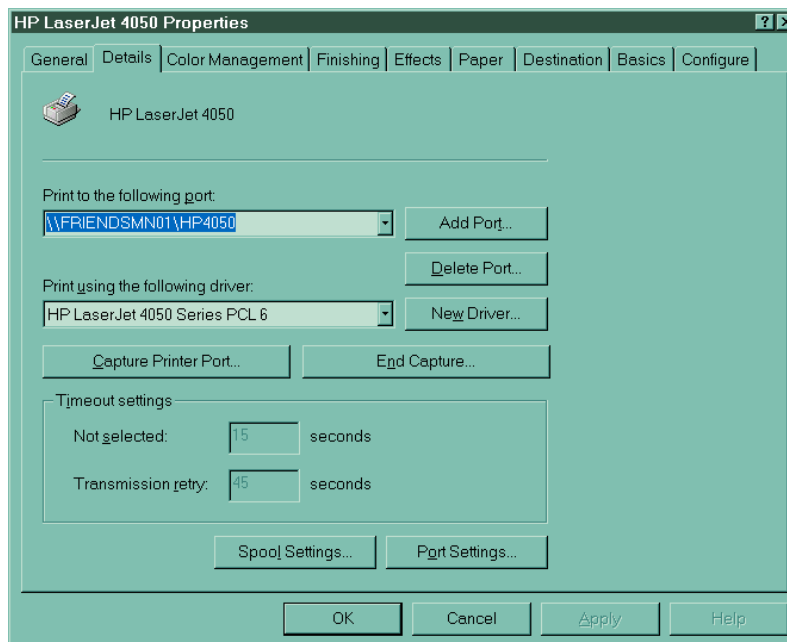
If you run into problems later with the printer you can look at the printer properties in **Start Button ->Settings -> Printers**.

Select the printer, right click for **Alt-menu**, and select **Properties**.

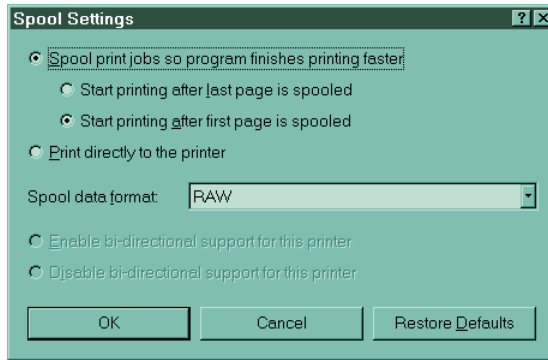


The Printer properties page comes up. Most of the problems involve the port, the driver or the spool settings.

Make sure the port and driver match what has already been set up as shown below.



You can also check the spool settings by clicking on the **Spool Settings** button and the Spool Settings window comes up.



Make sure “**Spool print jobs...**” is selected and that it starts printing after the first page is spooled.

- Click on “**OK**” and exit.